



# COMMUNITY GUIDE

## *Spring Edition*

The ultimate guide to dog friendly businesses  
in Kitchener, Waterloo, Cambridge & beyond

Issue 12: March 2024

# TABLE OF PAW-TENTS

## 05 A Note from the Team

## 09 Events

- Event Guidelines
- Dog Friendly KW Events

## 15 Education

- Listen Now! The DFKW Podcast
- Pet First Aid Kits
- Pet Insurance
- Car Safety
- Crash Rated Dog Crates
- Plant Guide
- Respect Service Dogs

## 24 Dog Friendly Spaces

- Breweries
- Restaurants
- Cafes & Coffee Shops
- Services
- Car Dealerships
- Stores & Shopping

## 46 Local Dog Community

- Community Groups
- Dog Food & Treats

## 51 Outdoor Activities

- Trails
- Leash-Free Dog Parks
- Private Off-Leash Areas
- Greenspaces & Parks

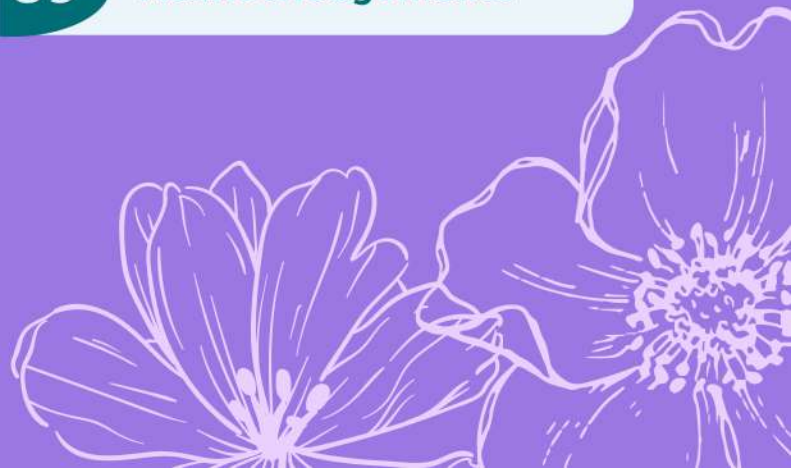
## 63 Service-Based Businesses

- Photographers
- Groomers
- Boarding
- Daycare
- Dog Walkers
- Trainers
- Training Tool Authorized Dealers
- Dog Sports
- Alternative Health Practitioners
- End of Life Care

## 86 Travelling with Your Dog

- DFKW Experiences
- Dog Friendly Hotels

## 89 Acknowledgements



# WELCOME TO THE DFKW COMMUNITY GUIDE!

Our Community Guide continues to grow year after year, with more businesses and spaces becoming dog-friendly! Our hope is that this guide is the go-to for dog owners in the Waterloo region looking for dog-friendly spaces, places, businesses, and resources. The guide contains a variety of resources for a wide audience - whether you're a new or long-time dog owner, fostering dogs, or even just considering adding a dog to your family, there's something in here for everyone!

If we missed a dog-friendly space or dog-related business in this version of the guide, let us know by filling in this [form](#) or sending us an email at [woof@dogfriendlykw.com](mailto:woof@dogfriendlykw.com).

## *How the Guide Works*

The guide is updated and published quarterly to ensure it remains as up to date as possible. Our publishing dates are March 1, June 1, September 1, and November 15.

Most of the information included in the guide is hyperlinked to more information, whether it be a website, social media account, or Google maps. Be sure to click through for more information.

Have a question? Email us at [woof@dogfriendlykw.com](mailto:woof@dogfriendlykw.com)



Photo Credit: [@cassandheraassistant](#)

Please note that Dog Friendly KW is not responsible or liable for any changes to information within, any advice found throughout the guide, or anything related to businesses and locations within this guide.

# THE WOOF PACK

*Meet the crew working to make Waterloo Region  
the most dog friendly community in Canada.  
[Learn about our full team on our website.](#)*



Photo Credit: @cassandheraassistant

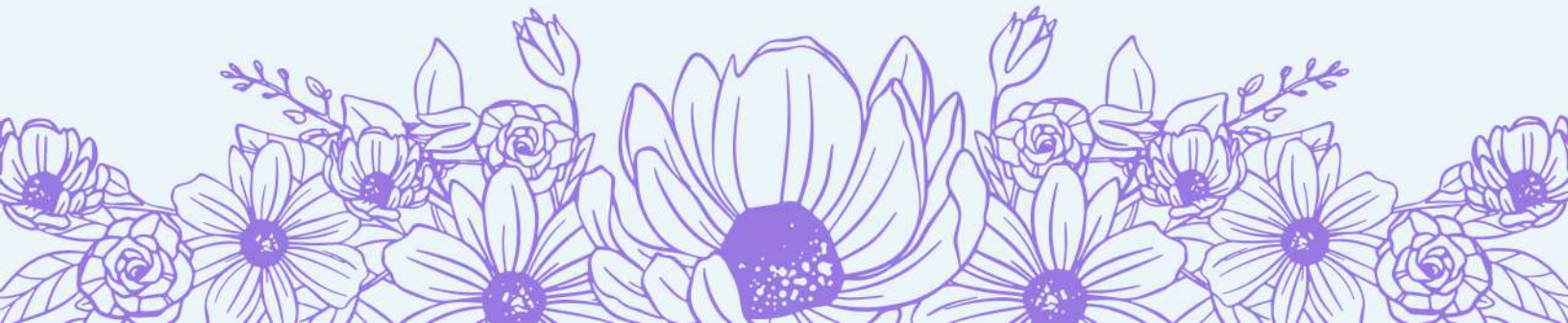




Photo: Lili Romeo, Rachel Radyk, Justine Sparling & Victor Dinh - our new Senior Leadership Team!

# A NOTE FROM THE TEAM

*2024 is undererway*

Dog Friendly KW saw an incredibly exciting start to 2024 when the City of Kitchener was officially certified as Canada's 1st pet-friendly city through Better Cities for Pets.

This certification speaks to the dog friendly community we have been building locally over the last four years. We are excited that this designation is one step closer to making Waterloo Region a destination for dog owners.

The first two months of 2024 also saw the launch of our fan-favourite, pop-up enrichment experience, SNIFFSCAPE! This year's SNIFFSCAPE is back to school themed with over 6,000 square feet and 10+ rooms to explore with your dog. Over 500 pups have already experienced all the magic SNIFFSCAPE has to offer! If you haven't visited already, we recommend you do before we close in the spring. SNIFFSCAPE is truly a labour of love, infused with the creativity of countless incredibly talented humans on our team!

While the first two months of the year have been incredibly exciting - don't you worry - we have more up our sleeves for the remainder of the year, including an improved Pups & Pinot passport program, more educational workshops, and of course, our staple annual events like Pups & Poses, Pupilates, Howloween, DOGtoberfest, Paw-liday and more!

2024 is also seeing some big organization structure changes, so keep your eye out for some very exciting announcements in the near future!



The Dog Friendly KW Leadership Team





# YEAR IN REVIEW

## 2024

### New Volunteers

**20+**

added to our team

### Instagram Followers

**+3,000**

joined our community bringing us to help us hit more than 10k followers

### Unique Users

**28K**

visited the Dog Friendly KW website with 61K+ pageviews

### Media Features

**13+**

### Donated

**\$3,000**

to community organizations, non-profits and charities

### Events Hosted

**45+**

with more than 10,000 attendees

### Social Media Posts

**150+**

showcasing our amazing dog community

### Collaborated with

**80+**

local vendors & events partners

### Podcast Downloads

**3,000**

on streaming platforms

### Pups & Pinot Wineries

**35+**

took part in Ontario's first dog friendly wine passport

### Petition Signatures

**1,000+**

to improve transit accessibility for local dog owners in our LRT Campaign

### SNIFFSCAPE bookings

**700+**

attended a one-of-a-kind enrichment experience

# GET INVOLVED WITH US

There are many ways to get involved in the Dog Friendly KW community. Whether you're a business looking to partner on or sponsor an event, or you're looking to volunteer with us, you can find more information below!

## *Advertise in the Community Guides*

We offer advertising space in our seasonal Community Guides, which reach a vast audience in the Waterloo Region and beyond. As a free digital guide containing significant information of interest to the dog-community, it's a great place to reach an audience you might not normally! Purchase ad space [here](#).

## *Volunteer with Us*

We're always looking for volunteers to help with different events and activities. Keep an eye on the '[Get Involved](#)' section on our website and our social media for upcoming opportunities. Questions? Send us an email at [people@dogfriendlykw.com](mailto:people@dogfriendlykw.com).

## *Sponsorship Opportunities*

We are often looking for sponsors to support Dog Friendly KW events, activities, initiatives or the podcast. If you'd be interested in learning more, send us an email to speak about an option that's right for you! We recently released a Community Partner Package and it has details about how you can support Dog Friendly KW initiatives.

Send us an email for more information - [woof@dogfriendlykw.com](mailto:woof@dogfriendlykw.com)

## *Our 2024 Community Partners*



# LET'S TALK ABOUT PETIQUETTE

At Dog Friendly KW, we are big advocates for responsible dog ownership. Heading out to a dog friendly location? Don't forget your petiquette!

## Ask for Permission

Even if a business is known to be dog friendly, please ensure you check with staff before entering a business.

## Go Pees and Poops

Even if your dog just went, make sure they don't need to relieve themselves to ensure no accidents happen in public spaces!

## Be Prepared

Pack a small bag or backpack with your dog's essentials. This may include water and water bowl, poop bags, treats, a blanket, etc.

## Stay In Tune

It's easy to get distracted, but don't lose touch with your dog! Stay in tune to what they're doing, and how they're feeling, to ensure success.

## Take a Break

Sometimes, your dog might get overwhelmed in a public space, and that's okay. Take a break. Walk away. Hit reset.

## Assess Readiness

Not all dogs are ready to visit a busy, dog friendly place. Take baby steps and make sure your dog is ready to be in a stimulating environment.

## Respect Service Dogs

Respect the space of service dogs, and do not interfere with dogs who are working and in training.

## Have Fun!

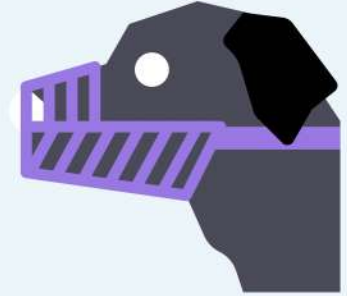
Enjoying public spaces with your dog is an incredible bonding experience - enjoy it!



# EVENTS

*DFKW Event Guidelines | DFKW Events*

# EVENT GUIDELINES

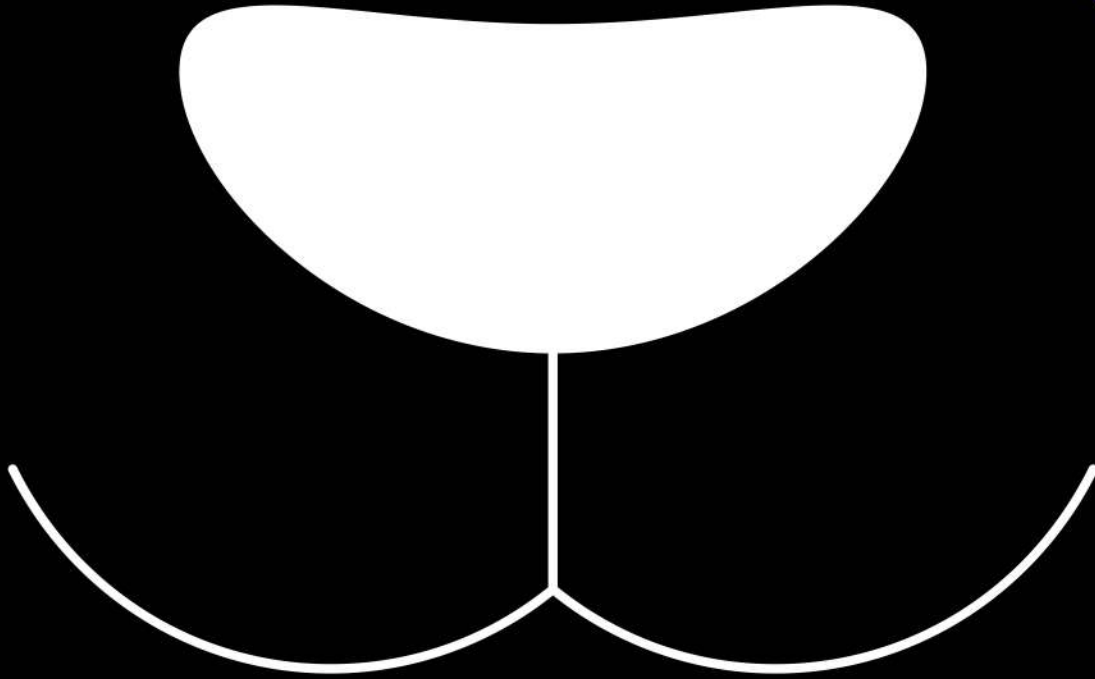


Do you attend our events? Don't forget that we have a set of super important event guidelines to ensure all two & four legged attendees are safe and comfortable!

- 
- ▶ No retractable leashes - all dogs must be on a 6 ft lead at all times.
  - ▶ Ask permission if you'd like to pet someone's dog or if you'd like to introduce your dog to theirs.
  - ▶ Please give all dogs space to ensure everyone remains safe and happy.
  - ▶ Please refrain from bringing personal chews or toys to any events. If you purchase chews or toys at our events, please wait until you get home to give them to your pup!
  - ▶ Be respectful of all training philosophies - at Dog Friendly KW we support all safe training methods based on current evidence-based practices. This includes the use of prongs, muzzles, e-collars and other training tools.
  - ▶ To reduce the spread of all respiratory viruses, including COVID-19, anyone who feels sick should stay home. For current COVID-19 guidance in Ontario, please visit [Public Health Ontario](#) or your local Public Health Unit for details.

*Dog Friendly KW presents*

BOOK NOW  
ON OUR  
WEBSITE



# **SNIFF**

---

# **SCAPE**

*A pop-up enrichment experience*



Located at 20 Ottawa St N, Kitchener



With 10+ school themed rooms



Each with their own enrichment activities



*Just a few of the lucky pups who have  
visited SNIFFSCAPE so far!*

**BOOK NOW**

Also explore one of our many other offerings such as: Agility Teasers, Dog Pacer, Trick Training Workshops, Pups & Poses, Pupilates & more!

# WHAT HOUSE DOES YOUR DOG BELONG IN?

Visit *SNIFFSCAPE* to sort your dog!



**BRAVE  
CONFIDENT  
DETERMINED**

Dogs who exhibit courage, loyalty to their family and friends, and a strong sense of determination would fit well in Gryffindog. They are often the first to explore new places and the last to back down from a challenge.



**AMBITIOUS  
CUNNING  
RESOURCEFUL**

Dogs who display ambition, cunning, and a knack for finding creative solutions belong in Snifferin. They are often seen using their intelligence to get what they want and are not afraid to work behind the scenes to achieve their desired outcomes.



Dogs who display patience, kindness, and a strong dedication to their humans and other animals would be suited for Hufflepup. They are often seen comforting others and enjoying peaceful and nurturing activities.

Dogs who exhibit intelligence, curiosity, and a sharp wit belong in Ravenpaw. They are often found investigating their surroundings, solving problems, and showcasing their ability to learn and adapt to new situations.



**LOYAL  
PATIENT  
KIND**

**INTELLIGENT  
CURIOUS  
WITTY**



# EDUCATION

*DFKW Podcast | Pet First Aid Kit |  
Pet Insurance | Car Safety | Crash Rated Dog  
Crates | Respecting Service Dogs*

# LISTEN NOW



Are you new to the [Dog Friendly KW podcast](#) and don't know where to start?

Check out some listener favourites!

1

[Kassidi Jones of @ginger\\_naps on dogs in anti-black history](#)

GUEST EPISODE

2

[Dogtoberfest Community Q&A](#)

LIVE RECORDING

3

[From Lassie to Snoopy: Representation of dogs in popular culture \(part 1\)](#)

12 MIN OR LESS

4

[Taylor MacDonald from BINDI'S BUCKET LIST on enrichment, contrafreeloading, dog body language & more!](#)

6

[Decoding and Understanding your Dog's BODY LANGUAGE \(mini episode\)](#)

7

[Exploring the Dog Friendly KW experience w/ Rachel Radyk](#)

GUEST EPISODE

8

[Unpacking and destigmatizing training tools](#)

9

[How to choose the BEST SERVICE PROVIDERS for your pup](#)

5

[An important PETIQUETTE Refresh](#)

10

[The challenge of adding another dog to your family](#)

Available on all podcast streaming platforms.



# PET FIRST AID KITS

It's never a bad time to put together a first aid kit for your pup. You never know when you might need it!

Exam gloves	Gauze	Tensor bandage
EMS utility scissors	Adhesive tape	ABD sterile pad
Triangular bandages with sewn edges; pins	Benzalkonium chloride antiseptic	Disposable cold pack
Emergency foil blanket	Water resistant carrying bag	Saline
Betadine	Tick remover	Dermagel
Septic powder (for nails!)	Stypic powder	Cloth muzzle
Vet wrap (adhesive bandage to itself)	Tweezers	Syringes/eye droppers for flushing wounds
Clean towels	Antiseptic spray	Assorted fabric adhesive bandages (for the humans!)

Don't forget to add emergency vet numbers and addresses!

Thank you to members of the Dog Owners of KW group for getting us started and Walks 'N' Wags Pet First Aid.

# PET INSURANCE

With pet insurance, you can focus on ensuring your pet gets the best care without the financial strain often brought on from unexpected medical costs.

Below are some common dog insurance companies.

**trupanion** <sup>TM</sup> **ca**   
Medical insurance for the life of your pet.

**fetch** <sup>by</sup> 

The most comprehensive pet insurance + health advice.

**PETS 10+ US** <sup>®</sup>  
ADMINISTERED IN  
QUÉBEC BY  
**SODACO**

**petsecure** <sup>TM</sup>  
CANADA'S PET INSURANCE



Photo Credit: @ivan\_and\_alanna



Photo Credit: @the\_land\_of\_dixie

# CAR SAFETY

We love bringing our dogs to dog friendly spaces and trails but as much fun as the destination is we need to implement proper safety measures to ensure we arrive safely.

## Crash Tested Doggie Seatbelt

- There are crash tested seatbelts that are specially designed to clip onto a harness and in the event of a crash prevent your dog from being overly thrown around the vehicle

## Crash Tested Harness

- It is essential the seatbelt is NOT attached to a collar as this can cause serious harm in the event of a crash
- A harness will lower the chances of serious harm

## Crash Tested Crate

- Having your dog loose in the car can cause them to be thrown around or out of the vehicle in the event of a crash
- Getting a properly fitted crash tested crate is the easiest way to ensure their safety - they are confined to a small space which reduces the opportunity for injuries
- Work with kennel companies to see which one works best for your dog and vehicle
- Be sure to secure the crate within the vehicle
- Crash rated crate companies include:
  - Ruffland
  - Gunner Kennels

# CRASH RATED DOG CRATES

Ruffland and Gunner crates are crash proof rated.  
Find them at these Ontario businesses or order online.

Business Name	Location	Ruffland	Gunner
<a href="#"><u>Endeavour K9</u></a>	West Montrose	✓	
<a href="#"><u>Dakota Creek Retrievers</u></a>	Acton	✓	
<a href="#"><u>Bauhound Haus Inc</u></a>	Milton	✓	
<a href="#"><u>K9 Expeditions Inc.</u></a>	Toronto	✓	
<a href="#"><u>Grassroots K9 Georgia</u></a>	Willow Beach	✓	
<a href="#"><u>Raw 4 Dogs Inc.</u></a>	Phelpston	✓	
<a href="#"><u>K9 Country Inn Inc.</u></a>	Meaford	✓	
<a href="#"><u>Doggy Discovery Zone</u></a>	Muirkirk	✓	
<a href="#"><u>Gunner</u></a>	USA, online		✓
<a href="#"><u>K9 Dynamics</u></a>	Orillia		✓

# RESPECT SERVICE DOGS

## INTERACTING WITH SERVICE DOGS



### Follow P.A.W.S.

National Service Dogs recommends following these steps:

# P

#### Put the person first

Talk to the person and ignore the dog. Doing the opposite is dehumanizing to the person and distracting to the dog.

# A

#### Assume independence

A working dog and their handler represent an independent unit. If you haven't been asked for assistance, it's probably not needed or wanted.

# W

#### Watch your eye contact

Do not engage the dog. Avoid pointing or gesturing toward the dog and/or making eye contact so the dog can do their job.

# S

#### Stay back

Give the team space to work. You should never touch or feed a service dog, especially without permission.

Content courtesy of [National Service Dogs](https://www.nsd.on.ca/).

# RESPECT SERVICE DOGS

## INTERACTING WITH SERVICE DOGS IN TRAINING

These dogs usually have a jacket that says "In Training."

They are still learning and need lots of space.

Try to ignore them. Avoid eye contact, making noises, or gesturing towards the dog. They will get distracted easier as they are still young.

You are welcome to approach the handler and ask to pet the dog, but please respect their answer.

## ONTARIO ASSISTANCE DOGS



### *Service Dog*

Assists one person with their disability. Full public access required with a doctor's note.



### *Guide Dog*

Assists a person with a visual impairment. Full public access.



### *Therapy Dog*

Comforts multiple people in places like schools, hospitals, homes for older adults, etc. Requires management approval for access.

Content Credit: Crystal Barnard - @her.service.grizzly

[Read more legislation about assistance dogs in Ontario.](#)



Jen Lema



YOUR *Pet Friendly* KW REALTOR®



@jen.lema.realtor



As an **animal lover** and **pet mom** to multiple fur (and non-fur) babies, I understand the wants and needs pet owners have when buying or selling a home.

From your first thoughts of a move to the years beyond, I pride myself on providing you with the best **knowledge**, **tools** and **resources** to have the most **successful** real estate transaction possible.

I am a **proud community partner** with the Humane Society of Kitchener Waterloo & Stratford Perth.

In addition to participating in many events and fundraisers in support of the HSKWSP, I **donate a portion of my commissions** from **every home** sold or bought with me to help animals in need in our community.



Learn more by visiting [jenlema.ca/lovesanimals](http://jenlema.ca/lovesanimals)



**Are You Planning on Selling or Buying a Home?**

Contact me to get your **personalized success plan!**



**Home Valuations** and **Buyer Consultations** are always **FREE** and without obligation.

**519-804-9895**

[jenlema.ca](http://jenlema.ca)

[soldwithjenlema@gmail.com](mailto:soldwithjenlema@gmail.com)



71 Weber Street E. Unit B Kitchener, ON N2H 1C6

Not intended to solicit those under contract.

# DOG FRIENDLY SPACES

*Breweries | Restaurants | Cafes & Coffee Shops |  
Service-Based Businesses |  
Car Dealerships | Stores & Shopping*



# BREWERIES

Business Name	Indoor	Walk-Up/Patio	Location
<u>Farm League Brewing</u> 	✓ Sunday only	✓	Cambridge
<u>Jackass Brewing</u>	✓	✓	Cambridge
<u>Rural Roots Brewing</u>	✓	✓	Elmira
<u>Counterpoint Brewing Co.</u>		✓	Kitchener
<u>Short Finger Brewing Co.</u>	✓	✓	Kitchener
<u>Together We're Bitter (TWB)</u> 	✓	✓	Kitchener
<u>Shakespeare Brewing Co.</u>	✓	✓	Shakespeare
<u>Block Three Brewing</u>	✓	✓	St. Jacob's
<u>Sparrow Brewing &amp; Roasting</u> 	✓	✓	Hespeler



# RESTAURANTS

\*\*Please ensure you call beforehand and ask if their patio is open for the season yet\*\*

Business Name	Notes	Location
<a href="#"><u>Fiddle and Firkin</u></a>		Cambridge
<a href="#"><u>The Aging Oak</u></a>		Cambridge
<a href="#"><u>Thirteen Food &amp; Beverage</u></a>		Cambridge
<a href="#"><u>Crowsfoot Smokehouse</u></a>		Conestogo
<a href="#"><u>Grill on the Green</u></a>		Elmira
<a href="#"><u>Olde Heidelberg</u></a>		Heidelberg
<a href="#"><u>Borealis Grille &amp; Bar</u></a>	Need to call ahead, access is through restaurant	Kitchener
<a href="#"><u>La Lola</u></a>	Inside and outside	Kitchener
<a href="#"><u>Del's Italian Kitchen</u></a>		Kitchener
<a href="#"><u>Graffiti Market</u></a>		Kitchener
<a href="#"><u>Grand Surf Lounge</u></a>		Kitchener

# RESTAURANTS

\*\*Please ensure you call beforehand and ask if their patio is open for the season yet\*\*

Business Name	Notes	Location
<a href="#"><u>Rich Uncle Tavern</u></a>		Kitchener
<a href="#"><u>Moose Winooski's</u></a>	Extended patio only	Kitchener
<a href="#"><u>StrykerZ Kitchen &amp; Bar</u></a>		Kitchener
<a href="#"><u>The Civil</u></a>		Kitchener
<a href="#"><u>Wineology</u></a>		Kitchener
<a href="#"><u>Scran &amp; Dram</u></a>		New Hamburg
<a href="#"><u>The Hemlock Barn</u></a>	Dog friendly inside and outside	St. Jacob's
<a href="#"><u>The Village Biergarten</u></a>		St. Jacob's
<a href="#"><u>Beertown Public House</u></a>		Waterloo
<a href="#"><u>Brown's Social House</u></a>	Covered patio	Waterloo
<a href="#"><u>Fratello Pizza</u></a>		Waterloo

# RESTAURANTS

\*\*Please ensure you call beforehand and ask if their patio is open for the season yet\*\*

Business Name	Notes	Location
<a href="#"><u>Gourmet Pizza</u></a>		Waterloo
<a href="#"><u>Kentucky Bourbon &amp; BBQ</u></a>		Waterloo
<a href="#"><u>Masala Bay</u></a>		Waterloo
<a href="#"><u>Prohibition Warehouse</u></a>		Waterloo
<a href="#"><u>St. Louis Bar &amp; Grill</u></a>		Waterloo
<a href="#"><u>Thai Sun</u></a>		Waterloo
<a href="#"><u>The Bauer Kitchen</u></a>		Waterloo
<a href="#"><u>Beertown</u></a>	Covered patio	Kitchener
<a href="#"><u>TWH Social</u></a>	Covered patio	Kitchener
<a href="#"><u>StrykerZ Kitchen &amp; Bar</u></a>	Covered patio	Kitchener





# CAFES & COFFEE SHOPS

\*\*Please ensure you call beforehand and ask if their patio is open for the season yet\*\*

Business Name	Indoor	Walk-Up/Patio	Location
<u>Monogram Coffee Roasters</u>		✓	Cambridge
<u>The Bellflower Market</u> <small>*Temporarily closed</small>		✓	Cambridge
<u>Kitchen Kuttings Cafe Inc.</u>		✓	Elmira
<u>Local Renaissance</u>	✓	✓	Elmira
<u>Cafe Pyrus</u>		✓	Kitchener
<u>City Cafe Bakery</u>		✓	Kitchener
<u>Smile Tiger Coffee Roasters</u>		✓	Kitchener
<u>Stockyards Coffee</u>		✓	Kitchener *Dogs cannot go into the cafe, however, the Catalyst Building is dog-friendly
<u>The Grove Cafe</u>		✓	Kitchener

# CAFES & COFFEE SHOPS

\*\*Please ensure you call beforehand and ask if their patio is open for the season yet\*\*

Business Name	Indoor	Walk-Up/Patio	Location
<u><a href="#">The Yeti Cafe</a></u>		✓	Kitchener
<u><a href="#">Ecocafe</a></u>		✓	St. Jacob's
<u><a href="#">Cafe Pyrus Outpost</a></u> 		✓	Waterloo
<u><a href="#">Camellia Bake Shop</a></u> 	✓	✓	Waterloo
<u><a href="#">Just Love Pie</a></u>		✓	Waterloo
<u><a href="#">Princess Cafe</a></u>		✓	Waterloo
<u><a href="#">Seven Shores</a></u>		✓	Waterloo
<u><a href="#">Midnight Run Cafe</a></u>	✓	✓	Waterloo
<u><a href="#">Grammy's Boutique and Espresso Bar</a></u>	✓		Wellesley
<u><a href="#">Sparrow Brewing &amp; Roasting</a></u>	✓	✓	Hespeler



THE BEST PATIOS  
ARE SHARED WITH  
BEST FRIENDS

*Borealis*  
GRILLE & BAR

Obsessively Local

LOCAL TASTES WAY BETTER  
Guelph + Kitchener | [BorealisGrille.ca](http://BorealisGrille.ca)

# SERVICES

## *Service-Based Businesses*

Business Name	Location	Type of Store
<a href="#"><u>Affinity Counselling KW</u></a>	Kitchener	Counselling Service
<a href="#"><u>Libro Credit Union DTK</u></a>	Kitchener	Credit Union
<a href="#"><u>Walper Barbers</u></a>	Kitchener	Barber
<a href="#"><u>Wonder Fit</u></a>	Kitchener	Fitness
<a href="#"><u>The Studio Gym</u></a>	Kitchener	Fitness
<a href="#"><u>City Cabs</u></a>	Kitchener- Waterloo	Transportation
<a href="#"><u>Romeo Salon Spa</u></a>	Waterloo	Hair Salon
<a href="#"><u>Water St Auto</u></a>	Cambridge	Auto Shop
<a href="#"><u>Economy Lube</u></a> * Weber St	Waterloo	Mechanic
<a href="#"><u>Poop Wrangler</u></a>	Ayr	Pet Waste Removal





# CAR DEALERSHIPS

## *Local Dog Friendly Dealerships Waterloo*

Business Name	Dog Friendly
<a href="#"><u>Forbes Motors GM</u></a>	✓
<a href="#"><u>Schlueter Hyundai</u></a>	✓
<a href="#"><u>Stockie Chrysler Dodge Jeep Ram</u></a>	✓
<a href="#"><u>Volvo Cars Waterloo</u></a>	✓
<a href="#"><u>Waterloo Honda</u></a>	✓
<a href="#"><u>Waterloo Nissan</u></a>	✓



Photo Credit: @obiwancavalier

# CAR DEALERSHIPS

## *Local Dog Friendly Dealerships Kitchener*

Business Name	Dog Friendly
<u><a href="#">Audi Kitchener-Waterloo</a></u>	✓
<u><a href="#">BMW Grand River</a></u>	✓
<u><a href="#">Crosby Volkswagen</a></u>	✓
<u><a href="#">Gemini Motors</a></u>	✓
<u><a href="#">Heffner Toyota</a></u>	✓
<u><a href="#">Kitchener Hyundai</a></u>	✓
<u><a href="#">Kitchener Kia</a></u>	✓
<u><a href="#">K-W Mitsubishi</a></u>	✓
<u><a href="#">Mercedes-Benz Kitchener-Waterloo</a></u>	✓
<u><a href="#">Schlueter Acura</a></u>	✓
<u><a href="#">Wendell Motors Chrysler Jeep Dodge</a></u>	✓

# STORES & SHOPPING

## *Local Dog Friendly Shops Kitchener*

Business Name	Location	Type of Store
<a href="#"><u>Gifted</u></a>	Kitchener	Gift Shop
<a href="#"><u>Second Look Books</u></a>	Kitchener	Book Store
<a href="#"><u>Sheridan Nurseries</u></a>	Kitchener	Garden Centre
<a href="#"><u>The Clothing Exchange</u></a>	Kitchener	Clothing
<a href="#"><u>UpMarket</u></a>	Kitchener	Home Decor
<a href="#"><u>W &amp; W Liquidators Inc</u></a>	Kitchener	Furniture Store
<a href="#"><u>TA Appliances</u></a>	Kitchener	Appliance Store



Photo Credit: @ivan\_and\_alanna

# STORES & SHOPPING

## *Local Dog Friendly Shops Waterloo*

Business Name	Location	Type of Store
<a href="#"><u>Crock A Doodle</u></a>	Waterloo	Pottery Shop
<a href="#"><u>Devitt House</u></a>	Waterloo	Gift Shop
<a href="#"><u>Factory Shoe</u></a>	Waterloo	Shoes
<a href="#"><u>Gibson Sound &amp; Vision</u></a>	Waterloo	Home Theatre Store
<a href="#"><u>Gold Leaf Botanicals</u></a>	Waterloo	Plant Store
<a href="#"><u>Harmony</u></a>	Waterloo	Gift Shop
<a href="#"><u>J &amp; J</u></a>	Waterloo	Cards and Collectables
<a href="#"><u>Lee Valley Tools</u></a>	Waterloo	Woodworking & Gardening
<a href="#"><u>Paint by Munzy</u></a>	Waterloo	Art Store & Gallery
<a href="#"><u>The Crumby Cookie Dough Co.**</u></a>	Waterloo	Desserts

\*\*outside only with cookie dough for your pup

\*lobby/main area only

# STORES & SHOPPING

## *Local Dog Friendly Shops Waterloo*

Business Name	Location	Type of Store
<a href="#"><u>The Shops at Waterloo Uptown Square*</u></a>	Waterloo	Shopping Mall
<a href="#"><u>The Truth Beauty Company</u></a>	Waterloo	Beauty Supplies
<a href="#"><u>Words Worth Books</u></a>	Waterloo	Book Store
<a href="#"><u>Midnight Snack</u></a>	Waterloo	Snack store



Photo Credit: @amigo\_adventuredog



Photo Credit: @strawhatwoofy

# STORES & SHOPPING

## *Local Dog Friendly Shops St. Jacob's*



St. Jacob's is incredibly dog-friendly!

Specific stores and restaurants are highlighted on [their website](#), but you can also check for the dog-friendly sign on store windows to confirm.

Business Name	Location	Type of Store
<a href="#">Angel Treasures</a>	St. Jacob's	Gifts
<a href="#">Artefacts</a>	St. Jacob's	Antiques
<a href="#">Calling Crow</a>	St. Jacob's	Paper & Gifts
<a href="#">Change Lifestyle &amp; Apparel</a>	St. Jacob's	Eco Living and Apparel
<a href="#">Living Fresh Flower Studio</a>	St. Jacob's	Flowers and Gifts
<a href="#">St. Jacob's Furniture House</a>	St. Jacob's	Furniture Store
<a href="#">The Bath Market</a>	St. Jacob's	Beauty Supply Store

# STORES & SHOPPING

## *Local Dog Friendly Shops St. Jacob's*

Business Name	Location	Type of Store
<a href="#"><u>Creative Landscape Depot</u></a>	St. Jacob's	Landscaping & Home supplies
<a href="#"><u>Divine Dream Crystals</u></a>	St. Jacob's	Crystal & Gift Shop
<a href="#"><u>Fog Off Clothing</u></a>	St. Jacob's	Clothing Store
<a href="#"><u>Hamel Brooms</u></a>	St. Jacob's	Home Goods Store
<a href="#"><u>Home Hardware</u></a>	St. Jacob's	Flowers and Gifts
<a href="#"><u>Kultrun Market</u></a>	St. Jacob's	Furniture Store
<a href="#"><u>La Crème</u></a>	St. Jacob's	Women's Clothing Store
<a href="#"><u>Living Fresh</u></a>	St. Jacobs	Flowers and Gifts
<a href="#"><u>Magnolias</u></a>	St. Jacob's	Gift Shop
<a href="#"><u>My Pop-Up Shop</u></a> <small>*Temporarily closed</small>	St. Jacob's	Home & Gift

# STORES & SHOPPING

## *Local Dog Friendly Shops St. Jacob's*

Business Name	Location	Type of Store
<u>Spanner</u>	St. Jacob's	Women's Clothing Store
<u>Spoil the Dog Bakery</u>	St. Jacob's	Dog Treats & Goodies
<u>St. Jacob's Emporium</u>	St. Jacob's	Gift Shop
<u>Tea, Earth and Sky</u>	St. Jacob's	Tea & Wellness
<u>Thatch &amp; Fringe</u> <u>*lapdogs only</u>	St. Jacob's	Hair Salon
<u>Traces of Heaven</u>	St. Jacob's	Women's Clothing Store
<u>The Weathered Gate</u>	St. Jacob's	Gift Shop
<u>Xclusive Elements</u>	St. Jacob's	Home & Fashion



# STORES & SHOPPING

## *Local Dog Friendly Shops Cambridge+*

Business Name	Location	Type of Store
<a href="#"><u>C &amp; C Gamebridge</u></a>	Cambridge	Board Games
<a href="#"><u>Cornerstone Furniture</u></a>	Cambridge	Furniture Store
<a href="#"><u>Crock A Doodle</u></a>	Cambridge	Pottery Shop
<a href="#"><u>Juniper Artisan Collection</u></a>	Cambridge	Gift Shop
<small>*Temporarily closed</small> <a href="#"><u>Pretty by Her</u></a>	Cambridge	Gift Shop
<a href="#"><u>Rookery Books</u></a>	Cambridge	Book Store
<a href="#"><u>The Art of Home</u></a>	Cambridge	Home Decor
<a href="#"><u>The Raw Company</u></a>	Cambridge	Pet Boutique
<a href="#"><u>Witty &amp; Co.</u></a>	Cambridge	Gift Shop
<a href="#"><u>Colour Paradise</u></a>	Petersburg	Greenhouse

# STORES & SHOPPING

## *Franchise & Big Box Stores*

Generally, these stores allow dogs, however, please check with your local store before entering with your pup.

Note: if these stores are inside, or attached to a mall, they are not dog friendly.

### FOR THE PET LOVER



### FOR THE OUTDOORSY



# STORES & SHOPPING

*Franchise & Big Box Stores*

FOR THE HOMEBODY



WINNERS

FOR THE PAPER LOVER



FOR THE CRAFTY

Michaels



# STORES & SHOPPING

*Franchise & Big Box Stores*

FOR THE DIY-ER



- OFF-LEASH
- OBEDIENCE
- PROTECTION
- BOARD & TRAIN
- BEHAVIOUR MOD
- TRAINED DOG SALES



 226-978-1090

 NOBLE.K9\_

 KW.NOBLE.K9

**NOBLE K9**  
**DOG TRAINING**

[WWW.NOBLEK9.CA](http://WWW.NOBLEK9.CA)

# DOG FRIENDLY TRANSIT

*Help us make the Region of Waterloo LRT dog friendly!*



**SIGN HERE**



*Let's Make Some Magic Together!*



To make your pet a star, please contact:  
**[laurawombwell.com](http://laurawombwell.com)**

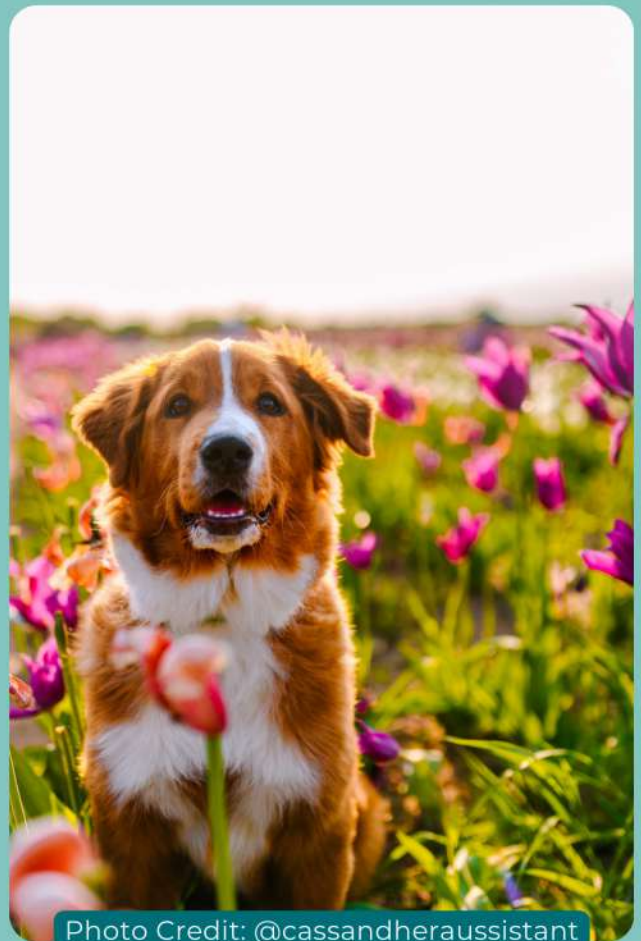


Photo Credit: @cassandheraassistant

# LOCAL DOG COMMUNITY

*Community Groups | Dog Food & Treats*

# COMMUNITY GROUPS

Group	Location	Additional Details
<a href="#"><u>Leader of the Pack Dog Walking Club</u></a>	Kitchener-Waterloo	Pack walks Sunday mornings at 10am
<a href="#"><u>Kitchener-Waterloo German Shepherd Club</u></a>	Kitchener-Waterloo	Breed specific
<a href="#"><u>Helping Each other With Training KW</u></a>	Kitchener-Waterloo	Follow Facebook group for when events are posted
<a href="#"><u>Elmira pack walks and group training sessions</u></a>	Elmira	Organized by local dog owners
<a href="#"><u>Unleash Clever Canines</u></a>	Cambridge	Paw Parade, free leash training focused walks. <i>*Note: Celebrated equipment: Head or body harnesses, martingales and flat buckle collars max. 6' lead. Other tools accepted only upon approval.</i>
<a href="#"><u>Robin &amp; Otis from Country 106.7</u></a>	Kitchener	Occasional group walks, watch the Facebook page for updates
<a href="#"><u>Dog Owners of KW</u></a>	Kitchener-Waterloo	With over 6000 members, <a href="#"><u>the Dog Owners of KW group on Facebook</u></a> is a fantastic resource for dog owners in the Waterloo Region.

# DOG FOOD & TREATS

We have lots of incredible local dog treat and snack makers in the area, as well as a variety of food delivery businesses and local shops offering a wide range of foods, treats, and snacks.

Business	Location	Product
<a href="#"><u>CB Pet Food Supply</u></a>	Kitchener	Food and Supplies
<a href="#"><u>Terrible Toby's</u></a>	Kitchener	Treats and Supplies
<a href="#"><u>The Loose Girth</u></a>	Kitchener-Waterloo	Treats
<a href="#"><u>The Healthy Barker</u></a>	Waterloo	Gently Cooked Food
<a href="#"><u>The Raw Company</u></a>	Cambridge	Raw Food and Treats
<a href="#"><u>Spoil the Dog</u></a>	St Jacobs	Treats and Dog Merch
<a href="#"><u>Lu &amp; Di CBD Treats</u></a>	Ontario	Treats





# DOG FOOD & TREATS

Business	Location	Product
<a href="#"><u>Oxford Tail Mix</u></a>	Guelph	Treats
<a href="#"><u>Puppy Park Pantry</u></a>	Guelph	Treats
<a href="#"><u>Smokin' Bones Dog Treats</u></a>	Guelph	Treats
<a href="#"><u>Canine Country Chews</u></a>	Utopia	Treats, Raw Food and Chews
<a href="#"><u>Oh My Dogness!</u></a>	Markham	Treats
<a href="#"><u>Dog Standards</u></a>	Toronto	Gently Cooked Food
<a href="#"><u>Baking You Happy</u></a>	GTA	Treats
<a href="#"><u>Treatoes</u></a>	GTA	Treats
<a href="#"><u>Dog Child</u></a>	Multiple Locations	Gently Cooked Food
<a href="#"><u>Alpha Dog Raw</u></a>	Multiple Locations	Raw Food and Bones
<a href="#"><u>It's Barking Good</u></a>	Toronto	Treats

# TOP DOG GEAR

MADE FOR THE ADVENTURE DOG



## BioThane Collars, Leashes & More

-  Waterproof
-  Stinkproof
-  Durable
-  Handcrafted
-  Customizable

Authorized ECollar Technologies & Herm Sprenger Dealer

## How to Get it

Available for shipping, or for pick up in Cambridge, ON

## Contact Us

 [www.topdoggear.ca](http://www.topdoggear.ca)

 [contact@topdoggear.ca](mailto:contact@topdoggear.ca)

  [@topdoggear.ca](https://www.instagram.com/topdoggear.ca)

# OUTDOOR ACTIVITIES

*Trails | Leash-Free Dog Parks |  
Private Off-Leash Areas |  
Greenspaces & Parks*

# TRAILS

## *Urban | On-Leash*

Trail	Distance	Location
Breithaupt Park	1.2 km linear	Kitchener
Homer Watson Park	5.1 km linear	Kitchener
Huron Natural Area	multiple trails	Kitchener
Iron Horse Trail	10 km linear	Kitchener
Kiwanis Park	3.2 km loop	Kitchener
Monarch Woods	1.6 km loop	Kitchener
Steckle Woods	1.6 km loop	Kitchener
Walter Bean Trail	multiple sections	Kitchener

For finding additional trails and trail details, we highly recommend the [AllTrails app](#).



# TRAILS

## *Urban | On-Leash*

Trail	Distance	Location
Dryden Tract	3.2 km linear	Cambridge
Grand Trunk Trail	4.5 km linear	Cambridge
Linear Trail	6.3 km linear	Cambridge
Mill Run Trail	16.4 km linear	Cambridge
Paris Rail Trail	18.7 km linear	Cambridge
Puslinch Lake Loop	2.4 km loop	Cambridge
Bechtel Park	2.3 km loop	Waterloo
Columbia Hills Loop	4 km loop	Waterloo
Hillside Park	multiple trails	Waterloo
Spurline Trail	5 km linear	Waterloo
The Hydrocut	multiple trails	Waterloo
Crown Land Trail	5.40 km linear	Kitchener

For finding additional trails and trail details, we highly recommend the [AllTrails app](#).

# TRAILS

## *Rural | On-Leash*

Trail	Distance	Location
Elmira Lions Lake Trail	7.2 km loop	Elmira
Health Valley Trail	2.4 km linear	St. Jacob's
Avon Recreation Trail	121 km linear	Multiple Locations
Grand Valley Trail	250 km linear	Multiple Locations
Kissing Bridge Trailway	45 km linear	Multiple Locations
Baden Hills/Gibney Forest Loop	1.9 km loop	Wilmot
Schmidt Woods Trail	3.1 km loop	Wilmot
Petersburg Bush	3,2 km loop	Petersburg
Sandy Hills Trail	7.6 km loop	Woolwich
Snyder's Flats 	5.5 km loop	Woolwich

For finding additional trails and trail details, we highly recommend the [AllTrails app](#).

# LEASH-FREE DOG PARKS

Leash-free dog parks have rules, and are not suitable spaces for all dogs.

Here are some general rules to expect at your local dog park:

- No puppies (under 4 months/unvaccinated)
- Stay in close control of your dog at all times
- No treats or toys
- No dogs in heat
- No aggressive dogs
- Pick up after your dog
- Dogs must have proper licenses and vaccinations
- Dogs older than 7 months must be spayed or neutered

**\*\*always use dog parks at your own discretion and risk\*\***



Photo Credit: @canadiankane



# LEASH-FREE DOG PARKS

We have rated these parks on a scale of 1 to 5 based on Google Reviews and our own research.



## Bechtel Dog Park

*Kitchener*

Large; walking path



## Fergus Dog Park

*Fergus*

Large unfenced area with agility obstacles



## Kiwanis Park

*Kitchener*

1 km walk in; separate area for large & small dogs



## Maple Grove

*Cambridge*

Separate small dog area available; picnic tables for sitting



## St. Jacob's Off-Leash Area

*St. Jacob's*

Unfenced, naturalized leash-free area



## Health Valley trail

*St. Jacob's*

Fenced dog park  
\*\*Opening soon\*\*



## Elmira Dog Park

*Elmira*

No winter maintenance



## The Auditorium

*Kitchener*

Smaller; no shade



## George Lippert

*Kitchener*

Very small; no parking



## Wilmot

*New Hamburg*

Separate small dog area



## McLennan Park

*Kitchener*

Busy; seating area



\*\*always use dog parks at your own discretion and risk\*\*



# PRIVATE OFF-LEASH AREAS

Some of these areas require booking ahead of time.  
Please research and plan accordingly.

Name	Location	Notes
<a href="#">Heritage Pet &amp; Garden</a>	Ayr	Annual memberships only
<a href="#">Pawzone Leash Free Dog Park</a>	St Jacobs	<a href="#">Contact Creature Comfort Pet Emporium</a>
Leash Free Arena	Puslinch	<a href="#">DM Erin on Facebook to book</a>
<a href="#">Pinetree Pet Resort</a>	Guelph	Prices vary
<a href="#">Structured K9</a>	Milton	<a href="#">Book through SniffSpot</a>
<a href="#">Endeavour K9</a>	West Montrose	Indoor and outdoor spaces available



Photo Credit: @manitobamarshall



Photo Credit: @strawhatwoofy

# GREENSPACES & PARKS

## GRAND RIVER CONSERVATION AUTHORITY

The GRCA offers many winter, outdoor recreation activities in the Waterloo Region and beyond.

At GRCA parks you can enjoy dog friendly activities such as hiking and walking.



Most GRCA parks charge an admission fee; however, if this is a barrier for you, you can [borrow a parks pass from the Kitchener Public Library](#).

Visit the [GRCA website](#) for details.

## ONTARIO PARKS



While we do not have any Ontario Parks locations in the Waterloo Region, there are many within a few hours of driving.

Parks along the coast of Lake Huron make for a great day or overnight trip, even in the winter! Ontario Parks charge admission fees unless it is an unserviced park.

You can [borrow an Ontario Parks pass from the Kitchener Public Library](#) if needed.

# GREENSPACES & PARKS

Please remember these important things when visiting greenspaces:

- Keep your dog on a leash at all times
- Poop and scoop!
- Be respectful of the space, and to others

Trail	Location
<a href="#">Willow River Park (Victoria Park)</a>	Kitchener-Waterloo
<a href="#">McLennan Park</a>	Kitchener-Waterloo
<a href="#">Stanley Park Conservation Area</a>	Kitchener-Waterloo
<a href="#">Vogelsang Green</a>	Kitchener-Waterloo
<a href="#">Lakeside Park</a>	Kitchener-Waterloo
<a href="#">Sandhills Park</a>	Kitchener-Waterloo
<a href="#">Schneider Park</a>	Kitchener-Waterloo
<a href="#">Schneider Creek (GRCA)</a>	Kitchener-Waterloo
<a href="#">Rockway Gardens</a>	Kitchener-Waterloo
<a href="#">Eden Oak Trail Park</a>	Kitchener-Waterloo

For finding additional trails and trail details, we highly recommend the [AllTrails app](#).

# GREENSPACES & PARKS

Trail	Distance
<u><a href="#">Kolb Park</a></u>	Kitchener-Waterloo
<u><a href="#">Forrest West Park</a></u>	Kitchener-Waterloo
<u><a href="#">Laurentian Wetlands</a></u>	Kitchener-Waterloo
<u><a href="#">Idlewood Park</a></u>	Kitchener-Waterloo
<u><a href="#">Crosby Park</a></u>	Kitchener-Waterloo
<u><a href="#">Trillium Trail</a></u>	Kitchener-Waterloo
<u><a href="#">Waterloo Park</a></u>	Kitchener-Waterloo
<u><a href="#">Highbrook Park/</a></u> <u><a href="#">Borden Wetlands</a></u>	Kitchener-Waterloo
<u><a href="#">Soper Park</a></u>	Cambridge
<u><a href="#">Churchill Park</a></u>	Cambridge
<u><a href="#">Riverbluffs Park</a></u>	Cambridge
<u><a href="#">Cambridge Sculture Garden</a></u>	Cambridge
<u><a href="#">Northview Heights Lookout</a></u> <u><a href="#">Park</a></u>	Cambridge

For finding additional trails and trail details, we highly recommend the [AllTrails app](#).

# GREENSPACES & PARKS

Trail	Location
<a href="#"><u>Hillborn Knoll Regional Forest</u></a>	Cambridge
<a href="#"><u>Portuegese Swamp Trail</u></a>	Cambridge
<a href="#"><u>Chilligo Conservation Area</u></a>	Cambridge
<a href="#"><u>Hespeler Mill Pond</u></a>	Cambridge
<a href="#"><u>Riverside Park</u></a>	Cambridge
<a href="#"><u>Linear Park</u></a>	Cambridge



Photo Credit: @the\_land\_of\_dixie



Photo Credit: @peachylittlenorris

For finding additional trails and trail details, we highly recommend the [AllTrails app](#).





*Jenn Wilson*  
PET  PORTRAITURE

hello@jennwilson.com

519-503-6963

www.jennwilson.com

  @jennwilsonpetportraiture



Jenn Wilson Pet Portraiture provides on-location pet photography services in the Southwestern Ontario area. Jenn is a skilled cat-savvy, dog-adoring photographer who delights in capturing fun and captivating photographs of your cherished pets.



# SERVICE-BASED BUSINESSES

*Photographers | Groomers | Boarding |  
Daycare | Dog Walkers | Trainers | Training  
Tools | Dog Sports | Alternative Health Care  
Practitioners | End of Life Care*

# PHOTOGRAPHERS

## Alyse Owsiaccki

*Location: Guelph*

Dog, families, friends, events!



## AP Photo Studio

*Location: Waterloo*

Themed candid & action studio photos.

## Avila Photography

*Location: Kitchener*

Indoor and outdoor photography  
Capturing magical moments between  
loved ones - pets included.



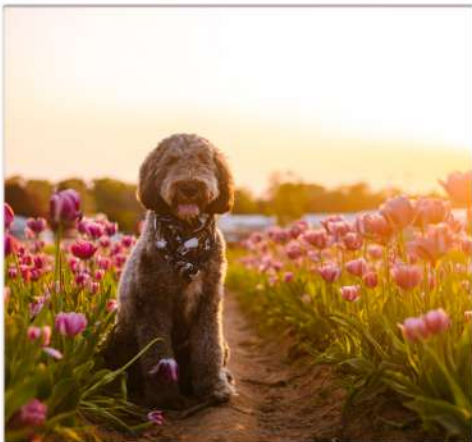


# PHOTOGRAPHERS

## [Avs Photography](#)

*Location: Guelph*

Pet, portrait, and candid photographer.



## [Cass and her Assistant](#) [Pet Photography](#)

*Location: Guelph*

Capturing best friends & furevers.



## [Dogby Photography](#)

*Location: Guelph*

Capturing the authenticity and character of all furry pets.



# PHOTOGRAPHERS

## Edgar and Pooch

*Location: Kitchener*

Studio based & magazine worthy.



## Happy Tails Pet Photography

*Location: Burlington*

Capturing the authenticity and character of pets.

## Indigo Pet Photography

*Location: St. Catherines*

A fun, custom photo experience;  
specializing in dogs and horses



# PHOTOGRAPHERS

## Jacqueline Gori

*Location: Breslau*

Pet Photography, studio and outdoors



## Jenn Wilson Pet Portraiture

*Location: Waterloo Region*

On location outdoor pet photographer. Supporting rescue dogs looking for homes.

## Kinsey Winger Photography

*Location: Waterloo Region*

Beautiful portrait & outdoor photos.



# PHOTOGRAPHERS

## Koppers Kaptures

*Location: Erin*

Dogs, couples, family.



## Laura Wombwell Photography

*Location: Guelph*

Studio & outdoor photos, and the queen of photoshop.

## Liz Johnston

*Location: Rockwood*

Capturing lifes special moments.  
Branding. Portraits. Love. Family.



# PHOTOGRAPHERS

## Matty Rodrigues Photography

*Location: Guelph*

Getting the best angle of your loved one



## Scruffy Dog Photography

*Location: Waterloo Region*

Canada's first and longest-running pet-exclusive photographer, creating one-of-a-kind images and artwork of your dog.

## Soul Studio Photography

*Location: Kitchener*

Outdoor lifestyle photography.  
Capturing your happiest moments.



# PHOTOGRAPHERS

## TamRose Photos

*Location: Guelph*

Capturing the love between pup friendly families through candid and lifestyle photography.



## The Doggy Did It

*Location: Erin*

Specializing in Dog Photography

## Three Sugar Photo

*Location: Kitchener-Waterloo*

Lifestyle portraits and wedding photographer.

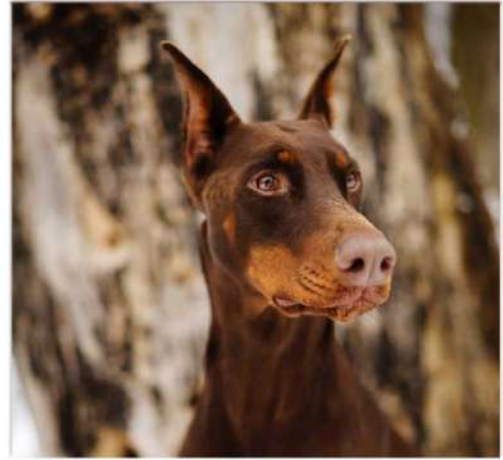
Capturing the real moments between loved ones.



# PHOTOGRAPHERS

## Trina Koster Photography

*Location: Guelph*



## Victor Rose Pet Photography



*Location: Waterloo*

Studio and location photographer, colourful photos.

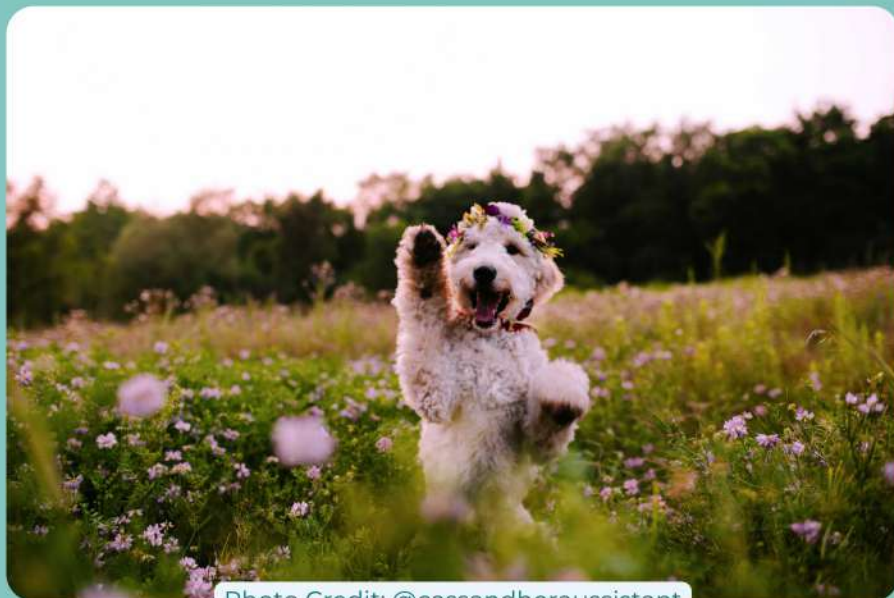


Photo Credit: @cassandheraassistant

# GROOMERS

Business Name	Location	Additional Notes
<a href="#"><u>Bark Avenue</u></a>	Kitchener	
<a href="#"><u>Clippers Pet Grooming</u></a>	Kitchener	
<a href="#"><u>Countryside</u></a>	Kitchener	Boarding & daycare
<a href="#"><u>Dogtopia Kitchener</u></a>	Kitchener	Boarding & daycare
<a href="#"><u>Domestic Alpha</u></a>	Kitchener	Offers home visits
<a href="#"><u>Fur-Ever Loved Pet Salon</u></a>	Kitchener	
<a href="#"><u>Grooming with Finesse</u></a>	Kitchener	
<a href="#"><u>Nails2Tails</u></a>	Kitchener	
<a href="#"><u>Paris and Company</u></a>	Kitchener	
<a href="#"><u>Paws and Relax</u></a>	Kitchener	
<a href="#"><u>Pawsitively Purrfect</u></a>	Kitchener	
<a href="#"><u>Serene Spaw</u></a>	Kitchener	
<a href="#"><u>Shannon's Pawsitive Pet Services</u></a>	Kitchener	Offers in-home nail trimming for all animals
<a href="#"><u>TLC Groomery</u></a>	Kitchener	
<a href="#"><u>Meg's Paw Spa</u></a>	Waterloo	Boarding & daycare
<a href="#"><u>Country Paws Boarding</u></a>	London	Boarding & daycare



# BOARDING

Business Name	Location	Additional Notes
<a href="#"><u>New Approach Canine</u></a>	Cambridge	Offers training & daycare
<a href="#"><u>Countryside</u></a>	Kitchener	Offers daycare
<a href="#"><u>Dogtopia Kitchener</u></a>	Kitchener	Offers daycare & grooming
<a href="#"><u>Domestic Alpha</u></a>	Kitchener	Offers training, daycare & grooming
<a href="#"><u>Just-in-time Dog Walking &amp; Boarding</u></a>	Kitchener	Offers walking
<a href="#"><u>Woof Whisperer</u></a>	Kitchener	
<a href="#"><u>Noble K9</u></a>	Kitchener-Waterloo	Offers training
<a href="#"><u>KW Tails</u></a>	Kitchener; Waterloo	Offers walking
<a href="#"><u>Wag and Walk</u></a>	Kitchener; Waterloo	Offers training, daycare & walking
<a href="#"><u>Waterloo Pet Services</u></a>	Kitchener; Waterloo	Offers walking
<a href="#"><u>Wiggles &amp; Whiskers</u></a>	Kitchener; Waterloo	Offers walking



# BOARDING

Business Name	Location	Additional Notes
<a href="#"><u>Lavish Lair Small Breed Doggy Daycare</u></a>	Waterloo	Offers daycare
<a href="#"><u>Meg's Paw Spa</u></a>	Waterloo	Offers daycare & grooming
<a href="#"><u>Endeavour K9</u></a>	West Montrose	Offers training & daycare
<a href="#"><u>Country Paws Boarding</u></a>	London	Offers training & daycare
<a href="#"><u>Wagtime Kennels</u></a>	Beslau	Offers daycare
<a href="#"><u>Fur Babies Pet Care</u></a>	Kitchener	Offers walking

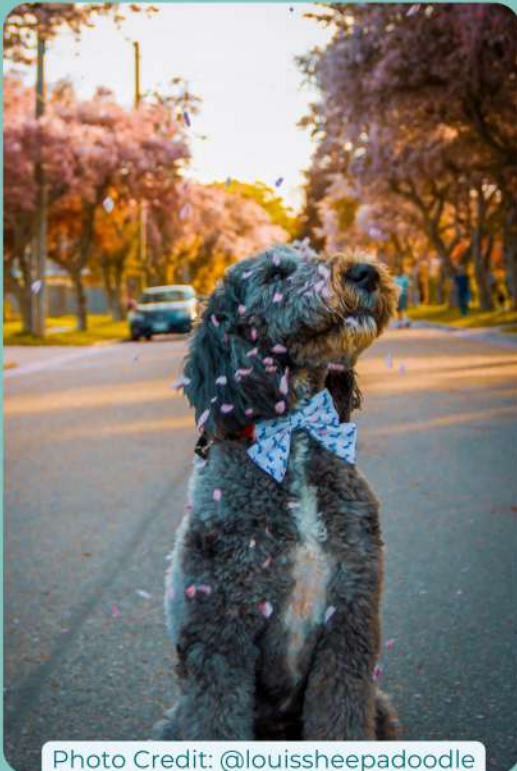


Photo Credit: @louissheepadoodle



Photo Credit: @amigo\_adventuredog

# DAYCARE

Business Name	Location	Additional Notes
<a href="#"><u>New Approach Canine</u></a>	Cambridge	Offers training & boarding
<a href="#"><u>Countryside</u></a>	Kitchener	Offers grooming & boarding
<a href="#"><u>Dogtopia Kitchener</u></a>	Kitchener	Offers grooming & boarding
<a href="#"><u>Domestic Alpha</u></a>	Kitchener	Offers training, grooming & boarding
<a href="#"><u>The Wag Inn</u></a>	Kitchener	Offers training
<a href="#"><u>Packlife Dog Retreat</u></a>	Kitchener	Offers grooming
<a href="#"><u>Wag and Walk</u></a>	Kitchener; Waterloo	Offers training, walking & boarding
<a href="#"><u>Meg's Paw Spa</u></a>	Waterloo	Offers grooming & boarding
<a href="#"><u>Country Paws Boarding</u></a>	London	Offers grooming & boarding
<a href="#"><u>Wagtime Kennels</u></a>	Breslau	Offers boarding


# DOG WALKERS

Business Name	Location	Additional Notes
<a href="#"><u>Dogtopia Kitchener</u></a>	Kitchener	Offers training & boarding
<a href="#"><u>Domestic Alpha</u></a>	Kitchener	Offers training, daycare & boarding
<a href="#"><u>Fur Babies Pet Care</u></a>	Kitchener	Offers boarding
<a href="#"><u>Just-in-time Dog Walking &amp; Boarding</u></a>	Kitchener	Offers boarding
<a href="#"><u>Dog Gone Walking</u></a>	Kitchener; Waterloo	
<a href="#"><u>KW Tails</u></a>	Kitchener; Waterloo	Offers boarding
<a href="#"><u>Wag and Walk</u></a>	Kitchener; Waterloo	Offers training, boarding & daycare
<a href="#"><u>Waterloo Pet Services</u></a>	Kitchener; Waterloo	Offers boarding
<a href="#"><u>Wiggles &amp; Whiskers</u></a>	Kitchener; Waterloo	Offers boarding
<a href="#"><u>Calm Canine Co</u></a>	Kitchener-Waterloo	
<a href="#"><u>Tonya's Tails and Trails</u></a>	Cambridge	
<a href="#"><u>The Fairy Dogmother</u></a>	Hespeler	

# TRAINERS

There are many different training styles used by dog owners and trainers.

Dog Friendly KW does not discriminate against training styles or the use of any tools.

Business Name	Location	Training Style
<a href="#"><u>Holland Dog Training</u></a> 	Cambridge	Force Free
<a href="#"><u>New Approach Canine</u></a>	Cambridge	Balanced Training
<a href="#"><u>Unleashed Clever Canines</u></a>	Cambridge	Games Based
<a href="#"><u>Dogtopia</u></a>	Kitchener	Positive Reinforcement
<a href="#"><u>Domestic Alpha</u></a>	Kitchener	Exposure Therapy
<a href="#"><u>Impressive Canines</u></a>	Kitchener	Force Free
<a href="#"><u>The Wag Inn</u></a>	Kitchener	Positive Reinforcement
<a href="#"><u>Elite Dog Training</u></a>	Kitchener-Waterloo	Force Free
<a href="#"><u>Full Pawtential Dog Training</u></a>	Kitchener-Waterloo	Positive Reinforcement

# TRAINERS




Business Name	Location	Training Style
<a href="#"><u>Golden Leash K9's</u></a>	Kitchener-Waterloo	Relationship Based
<a href="#"><u>Leader of the Pack Professional Dog Services</u></a> 	Kitchener-Waterloo	Balanced Training
<a href="#"><u>My Girl Friday</u></a>	Kitchener-Waterloo	Positive Reinforcement
<a href="#"><u>Noble K9</u></a>	Kitchener-Waterloo	Balanced Training
<a href="#"><u>Perspectives Dog Training</u></a>	Kitchener-Waterloo	Force Free
<a href="#"><u>Wag and Walk</u></a>	Kitchener-Waterloo	Force Free
<a href="#"><u>Your Favourite Dog Trainer</u></a>	Kitchener-Waterloo	Relationship Based
<a href="#"><u>Packlife Dog Retreat</u></a>	Kitchener	Balanced Training
<a href="#"><u>Reliable K9</u></a> 	Paris	Relationship Based
<a href="#"><u>Structured K9</u></a>	Milton	Balanced Training

# TRAINERS

Business Name	Location	Training Style
<a href="#">Unleash Clever Canines</a>	Cambridge	Games Based
<a href="#">Clark Training Co</a> 	St. Jacobs	Balanced Training
<a href="#">Endeavour K9</a>	West Montrose	Balanced Training



## WAYS TO SUPPORT YOUR LOCAL HUMANE SOCIETY:

-  THIRD PARTY FUNDRAISING
-  MONTHLY DONATIONS
-  WISHLIST DONATIONS

FOR MORE INFORMATION, VISIT:  
[KWSPHUMANE.CA](http://KWSPHUMANE.CA)



## GREAT-TASTING CRAFT BEER

## ALWAYS DOG-FRIENDLY

- TAPROOM
- PATIO
- RETAIL STORE

[TWBBREWING.COM](http://TWBBREWING.COM)

@TWBCOOP

300 MILL ST, UNIT 1  
KITCHENER



# TRAINING TOOL AUTHORIZED DEALERS

These authorized dealers carry specialized training tools. Speak to your trainer to see if these tools might be helpful for you and your pup on your training journey!

Business Name	Location	Herm Sprenger	E-Collar Technologies
<u><a href="#">Top Dog Gear</a></u> 	Cambridge, Online	✓	✓
<u><a href="#">Shield K9 Dog Training</a></u>	Guelph	✓	✓
<u><a href="#">Balanced K9</a></u>	Kitchener	✓	✓
<u><a href="#">Packlife Dog Retreat</a></u>	Kitchener	✓	✓
<u><a href="#">Noble K9</a></u>	Kitchener	✓	✓
<u><a href="#">Endeavour K9</a></u>	West Montrose	✓	✓
<u><a href="#">Pet Valu</a></u>	Multiple Locations	✓	
<u><a href="#">K9 Dynamics</a></u>	Orillia	✓	✓

Read the [Dog Friendly KW Positionality Statement on Responsible Dog Ownership, Training Styles & Tools](#)



# DOG SPORTS

So you're interested in trying a dog sport?  
Here are a few local training facilities to check out!

Facility	Type	Location
<a href="#">All Agility</a>	<ul style="list-style-type: none"><li>• Agility</li></ul>	Cambridge
<a href="#">Companion Dog Training</a>	<ul style="list-style-type: none"><li>• Nosework</li><li>• Obedience/Rally</li></ul>	Cambridge
<a href="#">Structured K9</a>	<ul style="list-style-type: none"><li>• Nosework</li><li>• Wall Climb</li><li>• Barn Hunt</li><li>• Lure Course</li><li>• Dock Diving</li></ul>	Milton
<a href="#">Elite Dog Training</a>	<ul style="list-style-type: none"><li>• Obedience/Rally</li></ul>	Kitchener
<a href="#">Impressive Canines</a>	<ul style="list-style-type: none"><li>• Agility</li><li>• Nosework</li><li>• Obedience/Rally</li></ul>	Kitchener
<a href="#">Holland Dog Training</a>	<ul style="list-style-type: none"><li>• Agility</li></ul>	Princeton
<a href="#">Maza Dog Sports</a>	<ul style="list-style-type: none"><li>• Agility</li><li>• Obedience</li></ul>	Princeton
<a href="#">Oxford Dog Sports</a>	<ul style="list-style-type: none"><li>• Agility</li><li>• Nosework</li><li>• Flyball</li><li>• Obedience/Rally</li></ul>	Bright

# DOG SPORTS

Facility	Type	Location
<a href="#">Acton Agility</a>	<ul style="list-style-type: none"><li>• Agility</li></ul>	Flamborough
<a href="#">McCann Dogs</a>	<ul style="list-style-type: none"><li>• Agility</li><li>• Obedience/Rally</li></ul>	Flamborough
<a href="#">Venture Hill Barn Hunt</a>	<ul style="list-style-type: none"><li>• Barn Hunt</li></ul>	Ingersoll
<a href="#">Laliberte Farm</a>	<ul style="list-style-type: none"><li>• Lure Coursing</li></ul>	Delhi
<a href="#">Scratch &amp; Sniff</a>	<ul style="list-style-type: none"><li>• Obedience/Rally</li></ul>	Guelph



Photo Credit: @clarktrainingco



Photo Credit: @strawhatwoofy

# ALTERNATIVE HEALTH PRACTITIONERS



Canine Pain Relief

## Canine Pain Relief

- Physical Rehabilitation
- Osteoarthritis/ Senior Pet Care
- Hydrotherapy
- Chiropractic Care
- Laser Therapy
- Massage & Manual Therapy
- TENS/ NMES
- Cryotherapy/ Thermotherapy
- Mobility Aids



**Healing Hearts**

MOBILE ANIMAL REHABILITATION SERVICE INC.



## Healing Hearts Rehab

- Ultrasound Therapy
- Acupressure
- Therapeutic Exercises
- Gait Analysis
- Kinesiology
- Cryotherapy
- Thermotherapy
- Limb Mobilization
- Electrical Stimulation
- Massage
- Thermal Imaging
- Magnetic Therapy



## Kingsdale Animal Hospital

- Laser Therapy



KITCHENER-WATERLOO  
ANIMAL CHIROPRACTIC

## K-W Animal Chiropractic

- Chiropractic Care

# ALTERNATIVE HEALTH PRACTITIONERS



## Bridge Street Vet Hospital

- Laser Therapy



## Canine Tech Rehab

- Canine Rehab
- Laser
- Acupuncture



## Mitchell Animal Hospital

- Physical Rehabilitation
- Underwater Treadmill



## Waterloo North Chiropractic

- Chiropractic Care



## Felix and Fido

- At home nursing care connecting pet owners with credentialed vet techs



## Katie Speed Equine and Canine Massage Therapy

- Canine Massage

Looking for a vet in Ontario?

Visit the [College of Veterinarians of Ontario](#) to find a vet near you.

# END OF LIFE CARE

Saying goodbye to your dog is never an easy thing to do. We have gathered some resources, end of life service-providers, and support services below.

## Mobile Veterinary Services & Home Euthanasia

- [KW Mobile Veterinary Services](#)
- [Dailley Mobile Veterinary Services](#)
- [Close Veterinary Services](#)
- [Black Creek Mobile Veterinary Services](#)

## Support & Counselling

- [Association for Pet Loss and Bereavement](#)
- [Ontario Pet Loss](#)
- [Seeing Through the Label](#)
- [Helen Goldberg, Pet Loss Counselling](#)
- [Gateway Pet Memorial](#)
- [Ontario Veterinary College \(OVC\) Pet Trust](#)
- [The Hospice Heart](#)

## Resources

- [Ontario Veterinary College \(OVC\) Pet Trust](#)
- [Quality of Life Scale, Jefferson Animal Hospital](#)

## Afterlife Care

- [Evermore](#)
- [Dailley Mobile Veterinary Services](#)

# TRAVELLING WITH YOUR DOG

*DFKW Experiences | Dog Friendly Hotels*

# DFKW EXPERIENCES

Looking for the perfect day to spend with your pup?  
Try out one of these ideas!

## A TRIP TO THE GARDENS

1. Chase away the winter blues and get excited for spring by visiting dog friendly nurseries such as Colour Paradise Greenhouses in Petersburg! Get your pups stamp of approval on all the beautiful plants and flowers you will add to your garden this spring!
2. Afterwards, head over to Browns Social House to practice calm behaviour in their, covered and heated, dog friendly patio while the humans enjoy delicious food and drinks! Don't worry - it's worth the drive from Petersburg!



Photo Credit: @manitobamarshall



Photo Credit: @the\_land\_of\_dixie

## SNIFFSCAPE FUN

1. Escape the cold and rainy weather and book your appointment at SNIFFSCAPE, on the [Dog Friendly KW website](#). It is a fun enrichment experience for your pup! You can even bring 3 of their closest friends to enjoy it together! With 10+ rooms each with their own enrichment experience or activity there is something for every pup to enjoy
2. Enjoy the post SNIFFSCAPE sleepies by going to Strykerz Kitchen and Bar, just nextdoor, for some refreshments and good food on their covered, heated, patio.

# DOG FRIENDLY HOTELS

The following hotels are dog friendly in Waterloo Region:

- [Cambridge Hotel](#)
- [Courtyard St Jacobs](#)
- [Crowne Plaza](#)
- [Delta Hotel](#)
- [Double Tree Kitchener](#)
- [Hampton Inn & Suites](#)
- [Inn of Waterloo](#)
- [Kitchener Inn & Suites](#)
- [Langdon Hall](#)
- [The Laundry Rooms](#)
- [Staybridge Suites](#)
- [The Walper Hotel](#)

Please note: some hotels charge an additional pet fee.  
Also, ensure to confirm with other chain locations when booking.



Enjoy the  
sunshine on our

**dog  
friendly  
patio**

weather permitting



MALT & BARLEY  
PUBLIC HOUSE

1187 Fischer-Hallman Rd, Kitchener  
Daily food & drink specials  
**Bring your humans!**

Visit our other  
pet friendly  
patios at:

SCRAN & DRAM  
SCOTTISH PUBLIC HOUSE

IMPERIAL  
BARS & CATERING





# ACKNOWLEDGEMENTS

Thank you to the following businesses who sponsored the guide. You make it possible to keep this guide free and accessible for the community!



Photo Credit: @canadiankane

[Clan Group of Restaurants](#)

[Invisible Fence](#)

[Jen Lema Real Estate](#)

[Jen Wilson Photography](#)

[Kitchener-Waterloo](#)

[Humane Society](#)

[Laura Wombwell](#)

[Photography](#)

[Noble K9](#)

[The Neighbourhood Group](#)

[Top Dog Gear](#)

[TWB Brewing](#)



Follow us on social media and join our mailing list to stay up to date on the dog friendly scoop!

